

	6-9-84
Miles	2554 mi
	V-20W-50 Pacima
Diff lube	6-9-84 2559 (Topped up)
Strg gear Lube	6-9-84 2559 OK OK
Bled Brakes	7-1-84 2559 Put in DOT4
Front carb leak Tightened all	7/25/84

All new rad hoses (6) gts of Prestone Flushed (w/o chemicals)	8/19/84
---	---------

Attempted to seal oil leak at front of left head w/ Mastic Basket	8/5/84
---	--------

chk overdrive ok - also soldered wire in solenoid to fix od	9/8/84 3059
---	----------------

trans oil ok	9/18/84 3057
-----------------	-----------------

oil chg	10/6/84 3057
---------	-----------------

New brk lt sw
New oil seal temp sw

To [unclear] - [unclear] [unclear] [unclear]

Dir [unclear]

to [unclear] [unclear] [unclear] [unclear]

[unclear] [unclear]

[unclear] [unclear]

[unclear] [unclear]

[unclear] [unclear] [unclear] [unclear]

[unclear] [unclear] [unclear]

[unclear] [unclear] [unclear]

[unclear]

[unclear]

[unclear]

To 10/2/83
Sheet

A-C • ALFA ROMEO • ASTON MARTIN • AUSTIN HEALEY • AUDI • MASERATI • VOLKSWAGEN • MERCEDES • TOYOTA • FERRARI • DATSUN • LAMBORGHINI • LANCIA • FIAT • O-S-C-A

PEUGEOT • MAZDA • VOLVO

LAMBORGHINI • ROLLS-ROYCE

Topless Carriages

Imported and Classic Car Centre

MORGAN • SAAB • ROLLS-ROYCE • DINO • PORSCHE • PEUGEOT • MAZDA • VOLVO • CORVAIR • CORVETTE • RENAULT • A-C • ALFA ROMEO • ASTON MARTIN • JAGUAR

RESTORATIONS
Complete or Partial

SALES * * * PARTS

Tops • Tonneaus

3550 Willowdale Rd.

Telephone 219/432-0769

Fort Wayne, Indiana 46804

Ferrari
10/2/83

Mechanical -

- New oil seal - Diff
- " " " - Steering Box - or Per LPE "Fill w/Black Moly"
- Seal front coveron " "
- Oil & Filter change Spring
- New Fan Belt
- New Rad Hoses
- Voltage Reg to Riff
- Stop oil leak at fuel pump.

→ - Change brake fluid! 4/21/84

Soft Trim

NOTE!

- Left door ~~clean with wire brush & dremel, rust proof, replace~~
plastic coverup
- ~~Right door - new weather strip~~
- ~~Reassemble interior~~
- New sun visor lower screws: both sides!

over for pinion seal info

Topless Carriages

Imported and Classic Car Centre

RESTORATIONS
Complete or Partial

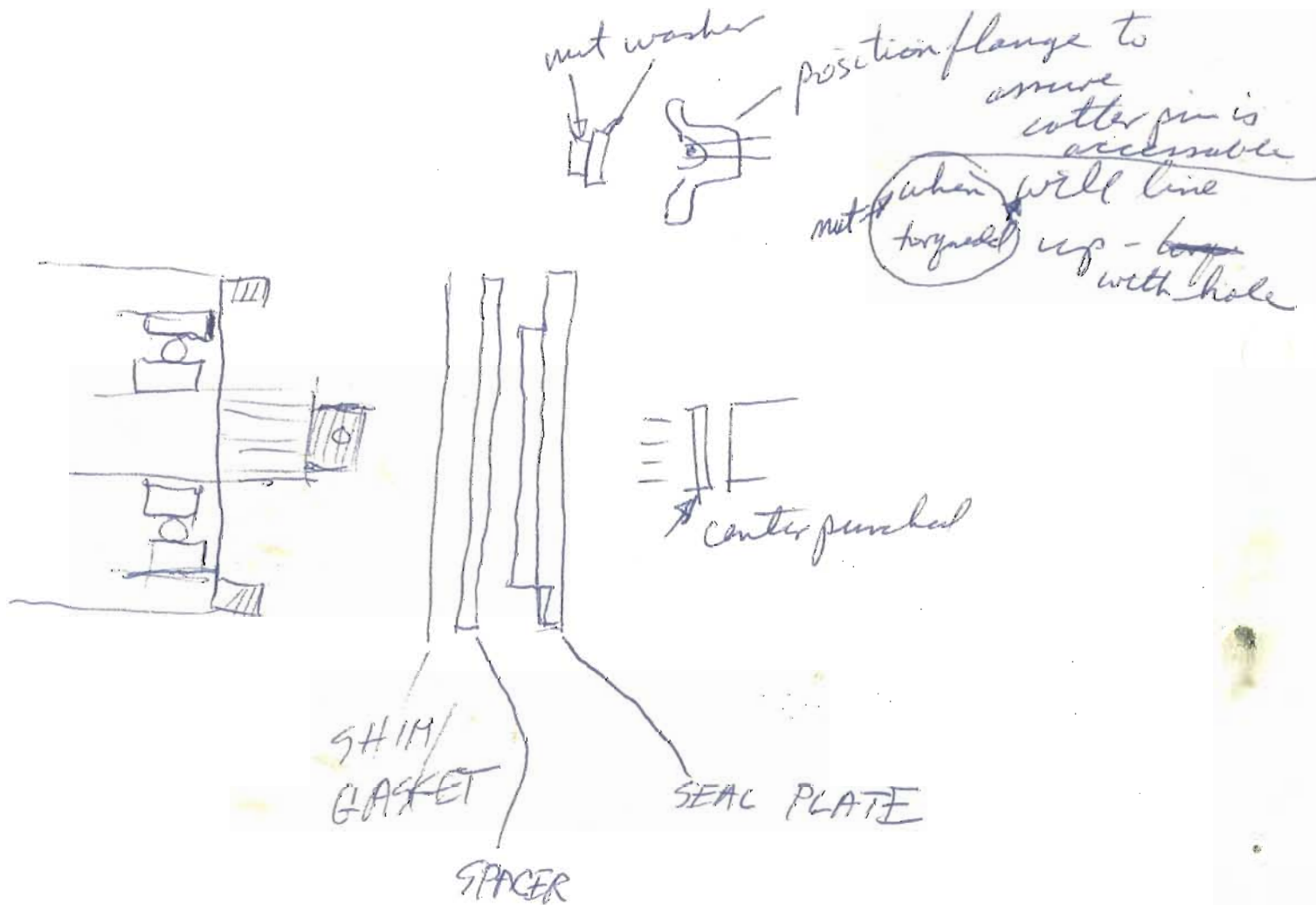
SALES * * * PARTS

Tops • Tonneaus

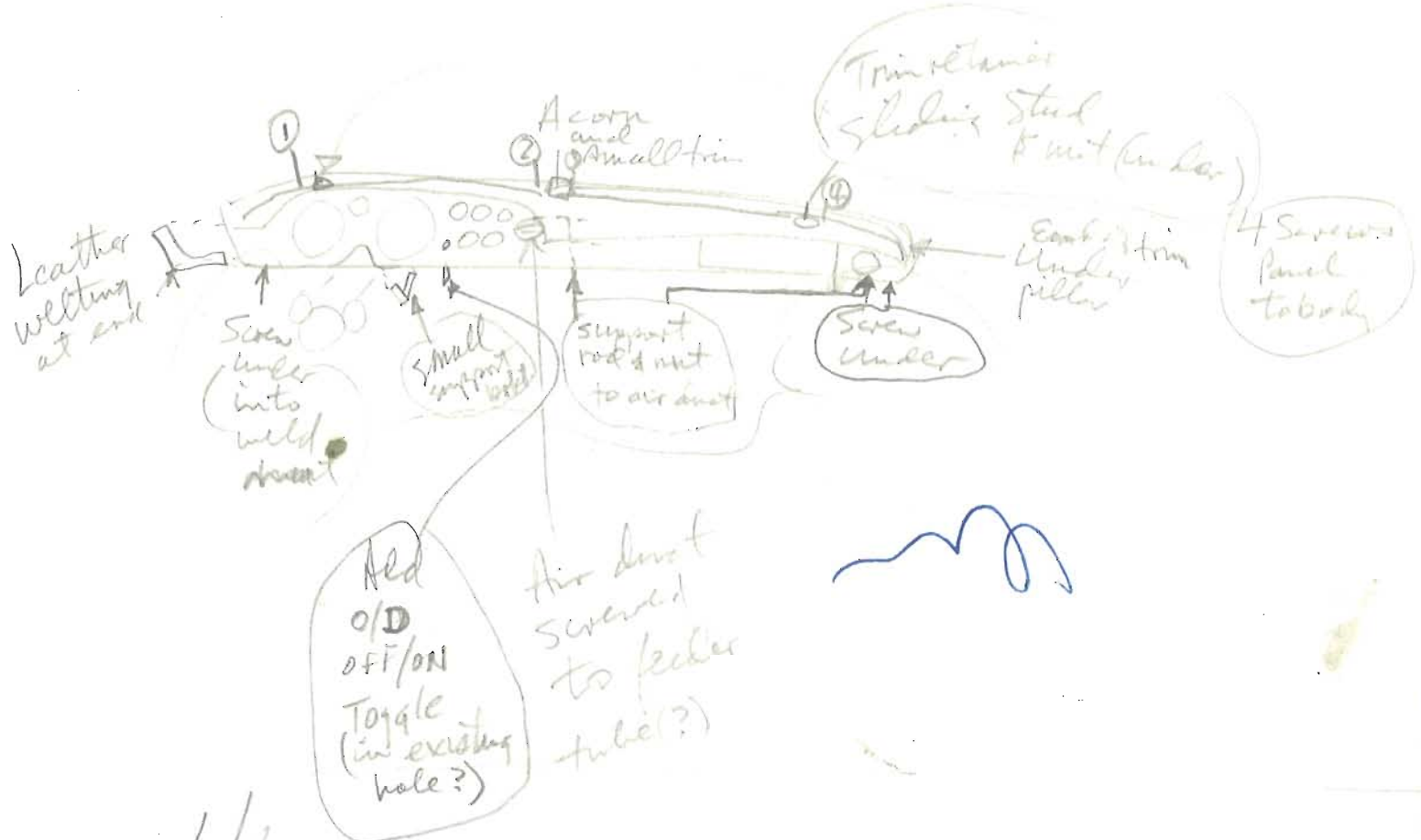
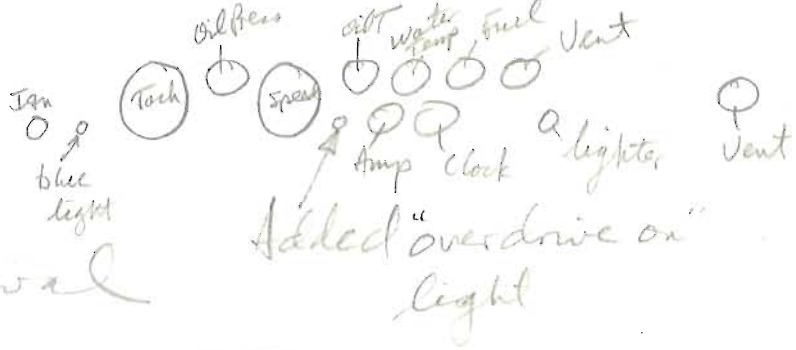
3550 Willowdale Rd.

Telephone 219/432-0769

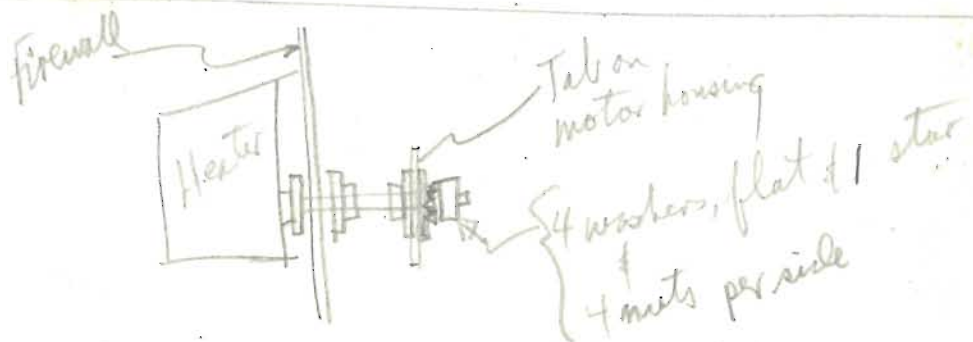
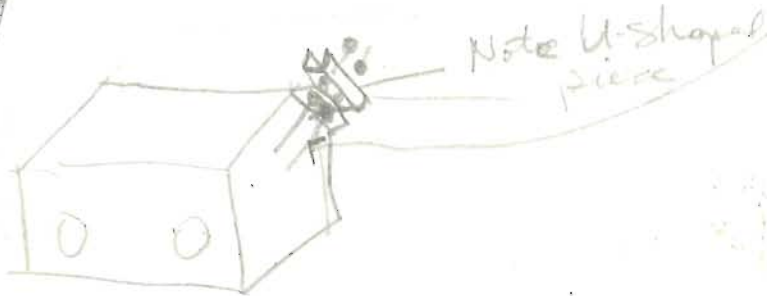
Fort Wayne, Indiana 46804



Just Panel Removal



Ltr box - long screws in bottom holes



*Chesapeake & Ohio Historical
Newsletter*

Robert L. Harvey, Treasurer
3821 Skyland Drive
Kingsport, Tenn. 37664

Dear Subscriber:

This letter is a reminder that your subscription renewal for the C & O Historical Newsletter falls due in _____ . It is our hope that you will wish to continue.

We appreciate your past support, and hope to be able to serve you well in the future with news and history of the C & O.

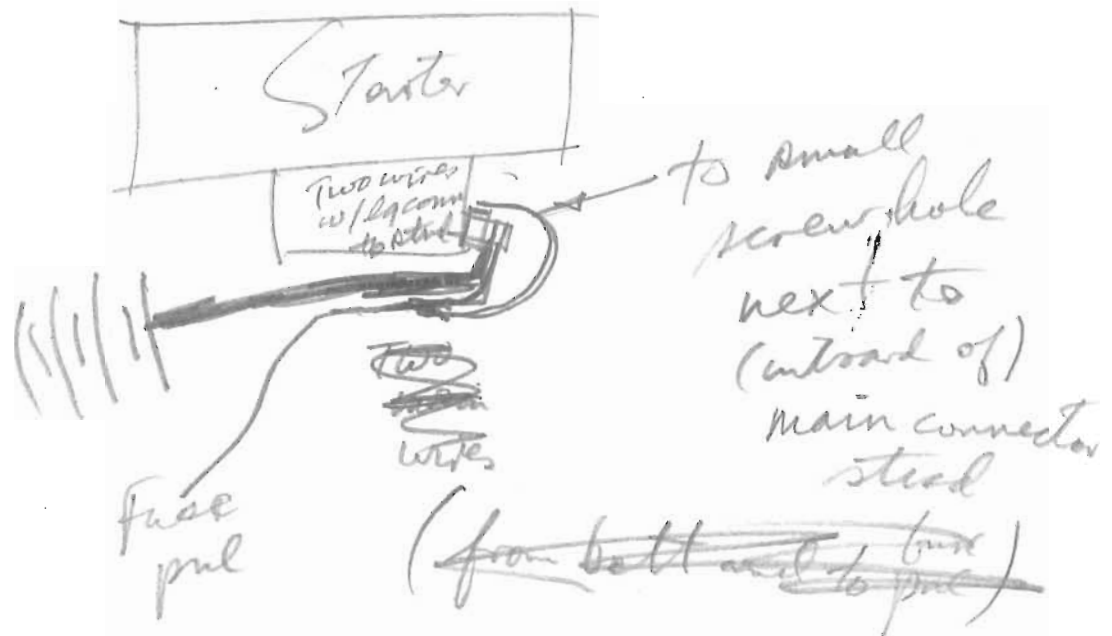
Current subscription rates are: First Class \$
 Third Class \$

Sincerely yours,



Robert L. Harvey, Treasurer

- ① Remove Front Panel
- ② Remove coil Bracket (not hood catch)
- ②a Remove defroster ducts (from inside)
- ③ Remove Rt hose (may have to cut)
- ④ Remove Lt hose
- ④a Unhook fan wires including screw for ground at bottom inside
- ⑤ Remove fan & housing
- ⑥ Undo " " second stage nuts to release inside housing
- ⑥a Undo bowden wire
- ⑦ Undo 4 screws at top of inside housing (U-shaped piece falls out)
- ⑧ " 1 screw for ltr motor ground
- ~~⑧a Unhook~~
- ⑨ Remove inside housing



Running instructions

page 18

Heating and ventilation

The car heating and ventilation equipment is situated at the centre of the dashboard and comprises:

1. A water radiator inside the heater box.
2. A fresh air intake between the windscreen and the rear of the bonnet.
3. A cable operated throw cock for warm water from the radiator.
4. A demister fan to draw fresh air over the heater.
5. There is also a fan behind the rear seat, for demisting the rear window.

Hot weather

Fresh air may be induced by:

1. Moving the facia mounted air control lever to the right and opening the heater doors - situated either side of the heater box - see fig. 11 - item 6.
2. Turning the facia ventilator controls to permit a full air flow.
3. Pulling knobs 7 & 8 diagram 11, to admit fresh air around the passenger's and driver's feet.
4. The air flow produced by action No. 1 may be increased by switching on the fan - though this is not effective above 40 mph.

Mild weather

De-misting.

Leave the heater doors closed but move the facia mounted air control lever to the right. The use of the fan will accelerate de-misting.

Cold weather

Heating, de-misting and de-frosting.

Move the heater temperature control lever fully to the right, but the air control lever only partially to the right.

Running instructions

page 19

Ventilation and heating - continued

Open the heater doors and switch on the fan - marked 'D'.

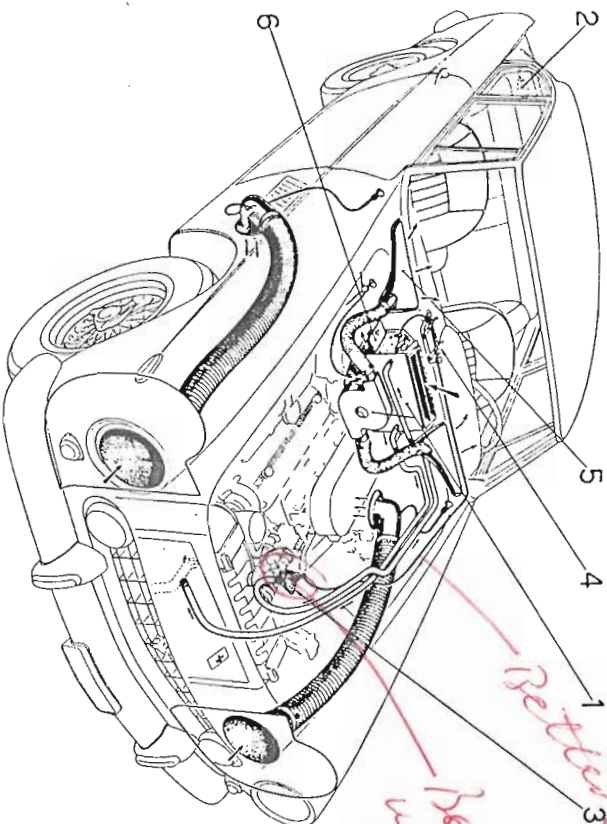
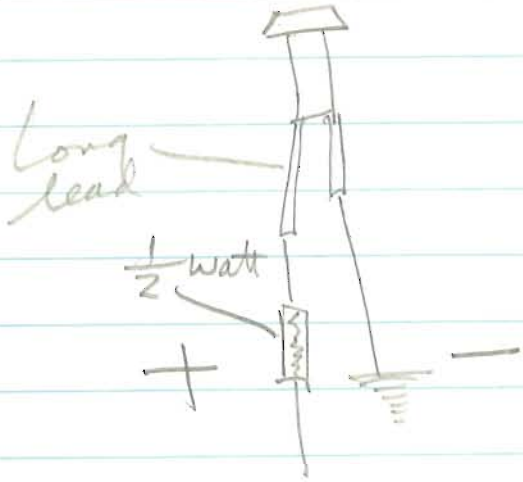


Fig. 11 - Ventilation and heating installation.

- 1) Ventilator and heating motor unit; 2) rear ventilator motor unit; 3) warm water cock; 4) controls group; 5) demist warm air inflow; 6) heater doors.

~~LEDs~~

LEDs -



For Lt & O/A warning
LED
hookup

Mid board plug

females to hook to it

- (2) Coils wires (1B)
- 5 wires { Home (19A)
- Upper power green (5B)
- Wiper ground (Back lower screws)

Plug B low center

female connector needed

Plug "A" low center

116 bits & park bits

- (2) 116 bits (13B)
- 7A
- 8A
- 9A
- 10A

Short
Blk-Red
is "X"

- ① Long white
- ② Blue-Black
- ③ White-Black
- ④ Short white

Stray coil

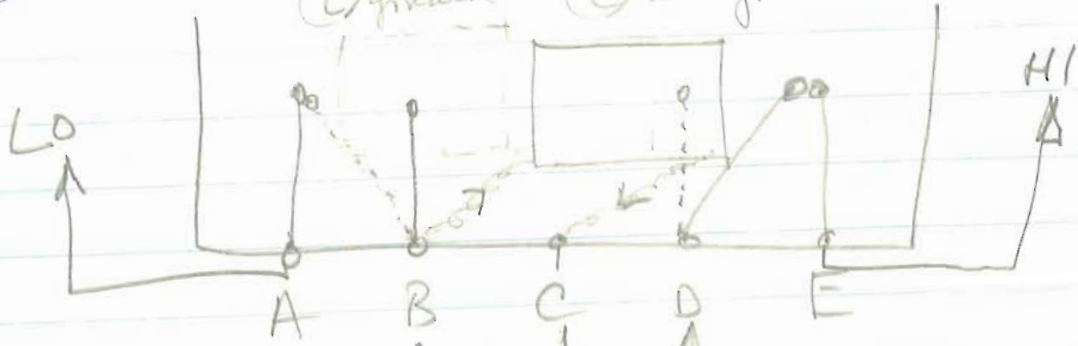
- Securing nut 9 1/2 turns to lock ("X" mark on slot locked)



Hd Lites

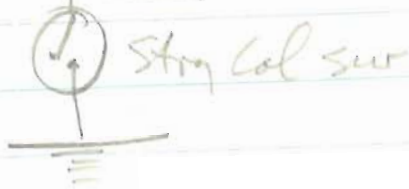
(A) to (B)
(D) not to (E)
(C) grounded

(A) not to (B)
(D) to (E)
(C) not grounded

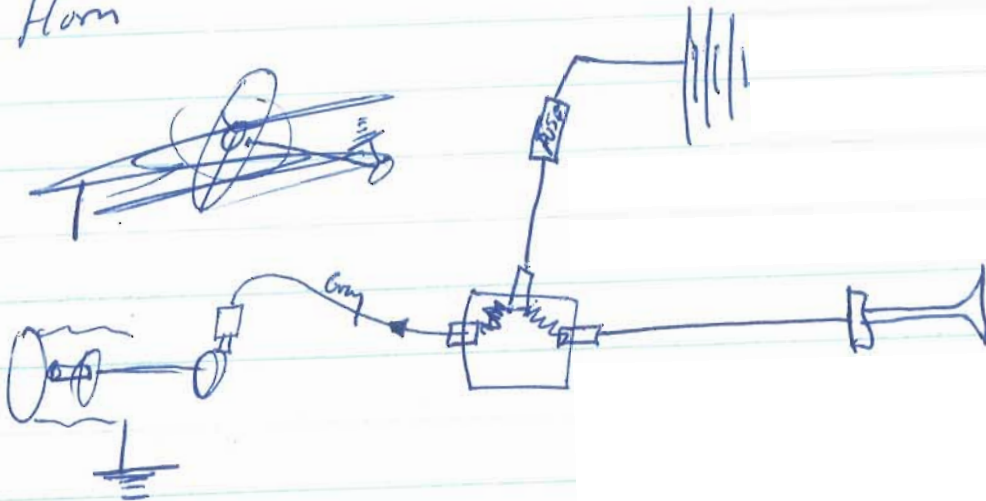


Power in both 1st & 2nd pos Hd Lt Sw

Power in 2nd pos only Hd Lt Sw



Horn



Paul Seal

~~Ref Transport~~

Bill Rudd - Don Rudd
Notes

(213) 988-7833

OD not
working?
DWP 8-17-92
was fixed
~~lube~~

- ① Oil level - Check oil
look for pieces
- ② Woodruff Key in pump
(not likely)
- ③ Clutch facing
- ④ Planetary

OD/Trans 80-90W ←
Diff 140W ←

Pinion Seal - Check bearing play

Ferrari 250 GTE Heater & Air Vent Info

CONTROL CABLES

1) ^{fresh} left Air Control - Under dash to ^{left} main air duct

Use IH # 433041-C1 & Shorten it from 14.69" to 12.00"

2) ^{fresh} Right Air Control - Under dash to rt. main air duct

Use IH # 189478-R91 as is

3) Heater Control - Sliding control to water valve

Use IH # 474101-C1 as is (mount water valve under-hood solidly at proper location for bowden cable to have adequate travel)

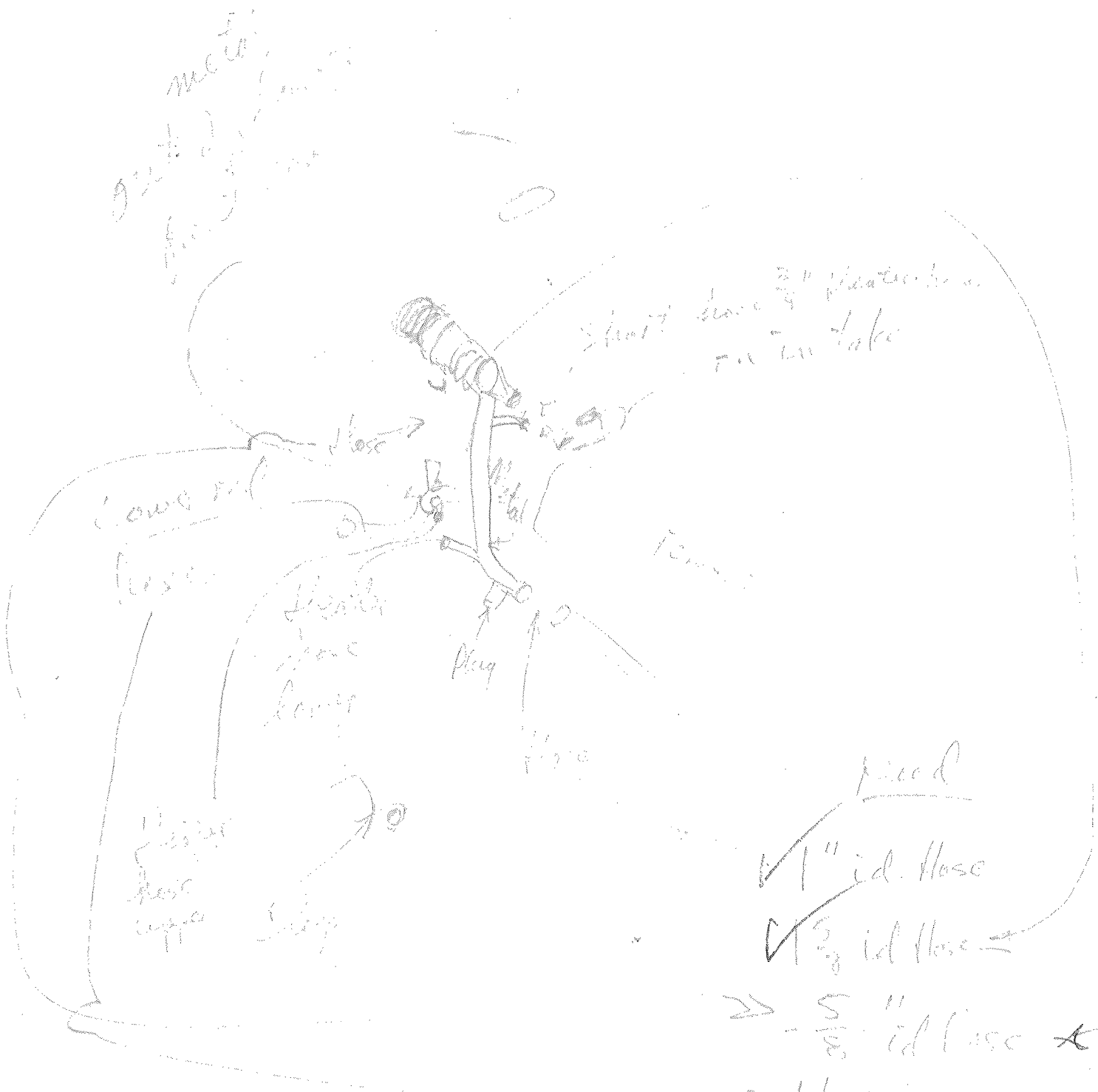
4) "Aria" Air control through heater core - Sliding control to air door in heater box

Use IH # 433041-C1 (Also must shorten to 12")

DUCTS (Industrial Flexible Air Ducting)

			I.D.	O.D.
Left Heater Box to Defroster Nozzle	- 15" long to fit	1 ⁹ / ₁₆ " nozzle	1 ³ / ₄ "	
RT " " " " " "	- 15" " " "	1 ⁹ / ₁₆ " nozzle	"	
RT Fresh air - main duct to ^{center} inst panel	- 36" " " "	2 ¹ / ₄ " " "	2 ³ / ₈ "	
RT " " " " " "	- 18" " " "	2 ¹ / ₄ " " "	"	
RT Main fresh air - front splash panel to metal duct	- 40" " " "	3 ³ / ₄ " " "	3 ⁷ / ₈ "	
RT " " " " " "	- 36" " " "	" " " "	" "	

metal
gasket
flange



Short hose $\frac{3}{4}$ " diameter
in intake

lower half
hose

short
hose
lower

upper
hose

fixed

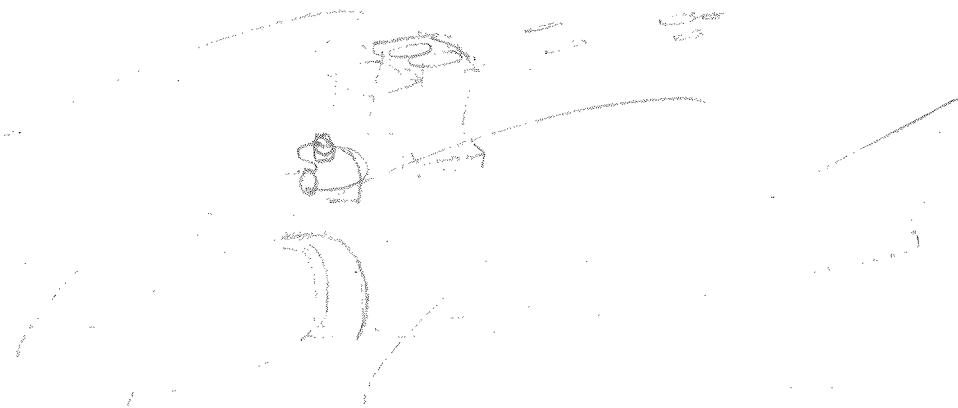
✓ 1" id. hose

✓ $\frac{5}{8}$ " id. hose

→ $\frac{5}{8}$ " id. hose *

→ $\frac{1}{4}$ " id. elbow *

suction
hose



Repair List – Ferrari 250 GTE S/N 4959

BRAKES

- 1. Install front line booster/tee
 - a. Has stripped adapter fitting
 - b. Needs bracket made and bolts for installation
- 2. Reclip all front brake lines DWP supplied parts
- 3. Flush brakes and refill with DOT 4 DWP supplied brake fluid (NOT SILICONE!!)

PARKING BRAKE

- 4. Is sticking – Free up and lube

RADIATOR

- 5. Reinstall lower radiator hose DWP supplied parts
- 6. Reattach electric fan clutch wires
- 7. Flush radiator and refill with antifreeze

BATTERY

- 8. Install a new one DWP?

Need 27F - Crown has one

REAR AXLE

- 9. Repair rear axle oil leak at right rear wheel
 - a. New hub seal?
- 10. Fill differential with lube
 - a. Use EP 90 or 80-85-90

CHASSIS

- 11. Grease Chassis
 - a. Need adapter for “slide-on” type fittings
- 12. Check transmission and overdrive lube
 - a. Thru plate on trans tunnel – driver’s side

GENERAL

- 13. Change oil and filters DWP supplied oil filters
- 14. Start car DWP – ~~fuel on the way down?~~

down tank?

Ferrari Parts and Information Sources

T. Rutlands
4896 N. Royal Atlanta Drive
Tucker, GA 30084
Phone: 404-493-8852
FAX: 404-934-6857
Comment: Orders direct from Italy

Partsource (Geoffrey Ohland)
32 Harden Ave.
Camden, Maine 04843
Phone: 207-236-9791
FAX: 207-236-6323
Comment: Has parts for 250's and good service

Dennis McCann
10840 Fancher Road
Westerville, OH 43081
Phone: 614-855-1103
FAX: 614-855-2850
Comment: Has parts, rebuilds 250 engines

Algar Enterprises, Inc.
1234 Lancaster Ave.
PO Box 167
Rosemont, PA 19010
Phone: 800-441-9824
FAX: 215-527-1100
Comment: Since 1964

Bill Rudd Motors
d/b/a Maranello Auto Parts
15058 Delano St.
Van Nuys, CA 91411
Phone: 800-233-7820
FAX: 818-988-7860
Comment: Knowledgeable - since 1958

FAF
3862 Stephens Court
Tucker, GA 30084
Phone: 800-522-2345
FAX: 404-939-5344
Comment: Big inventory (See pg 8.1.FAF)