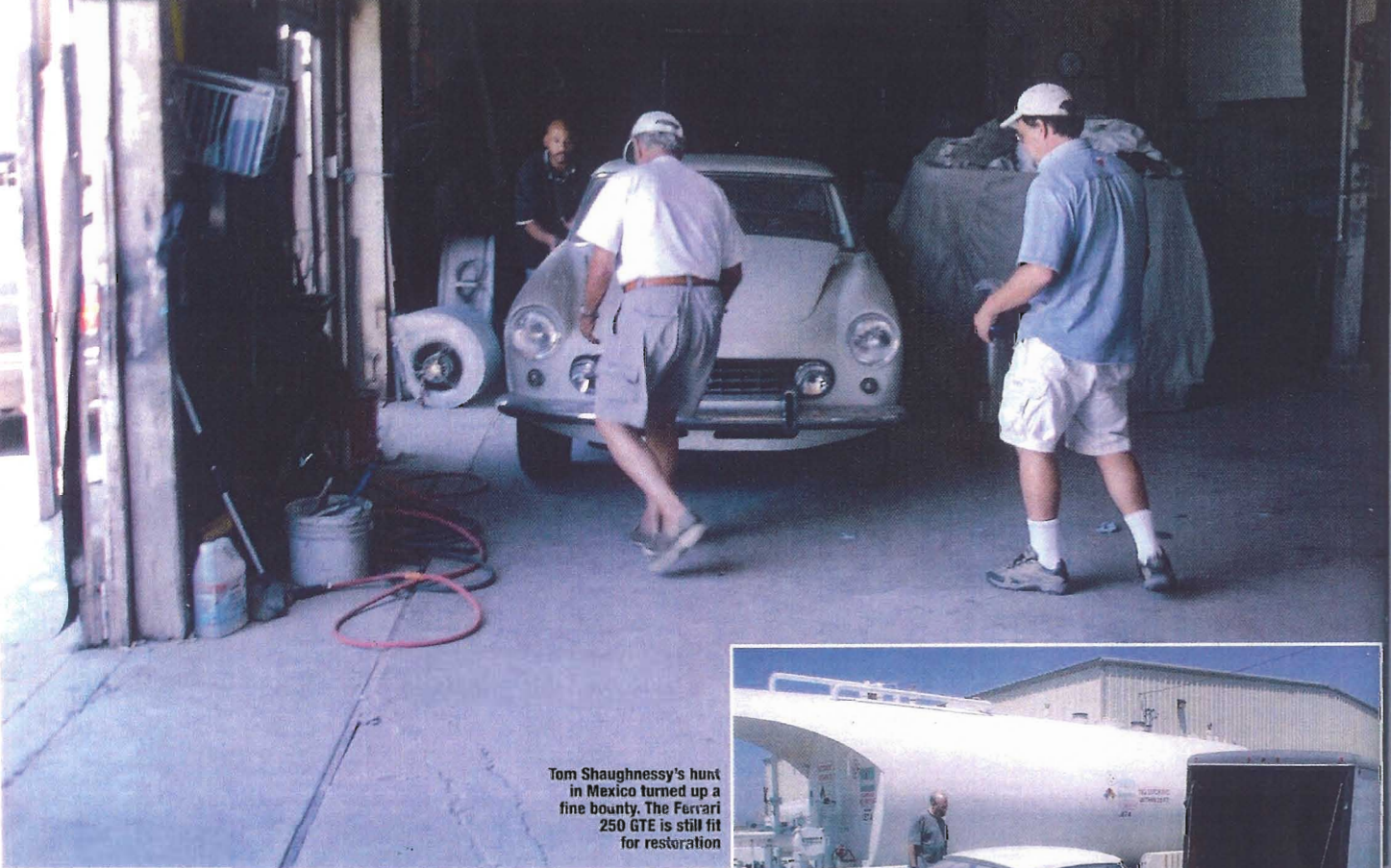
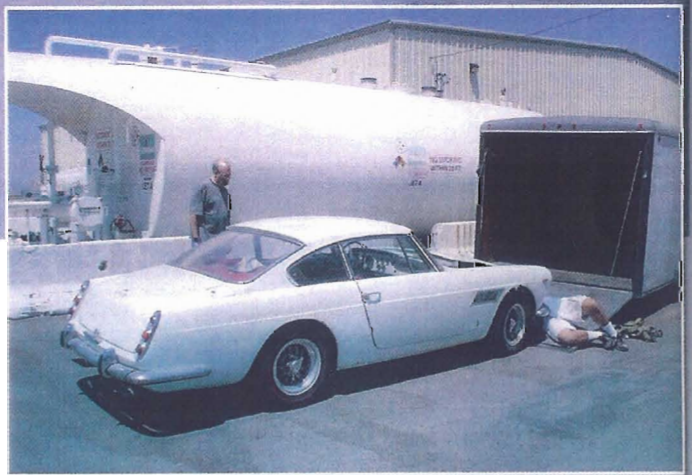


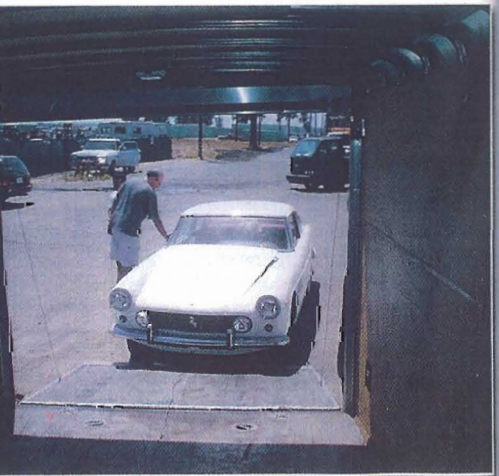
Readers' discoveries of barn finds and restoration dreams



Tom Shaughnessy's hunt in Mexico turned up a fine bounty. The Ferrari 250 GTE is still fit for restoration



Inspection found that chassis and engine serial numbers matched. So it's loaded up to go back home for some proper work



FERRARI MAKES A BREAK FROM THE BORDER

FERRARI HUNTER Tom Shaughnessy chased this 250 GTE Series II for eight years, finally finding it in a barn close to the Mexican border. He discovered it at the Olay Mesa border car lot, California, which was bursting with 50,000 cars donated to charitable causes – not the place you'd expect to find an old Ferrari.

It was stuffed in a corner, under a sheet, surrounded by damaged cars. The interior is partially disassembled, but looks reasonably complete. The data plate is missing, but the engine and chassis numbers match: both serial number 3921.

The GTE's new owner John Carlson was

with Shaughnessy when they took the cover off: 'It was clear that someone had tried to restore it at one point and whoever that was didn't know much about Ferraris.' The find included a rusty old briefcase full of receipts and details of a decade's-worth of restoration attempts.

'The car steered and stopped, so we figured we had at least something to work with. I still had not heard the car run, but Tom said he'd heard it a few months ago and there were no audible death rattles.'

Carlson's 250 GTE is one of 356 Series IIs built, powered by a 240bhp three-litre V12. It could be worth £40,000 when it's restored.