

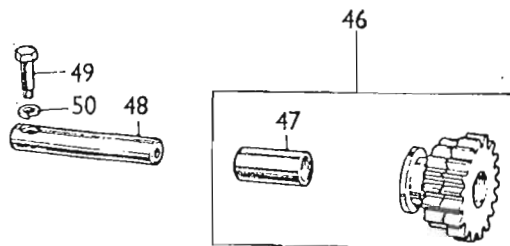
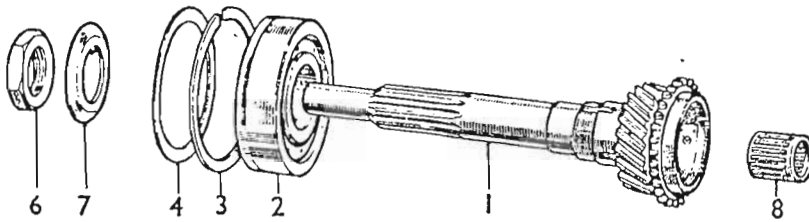
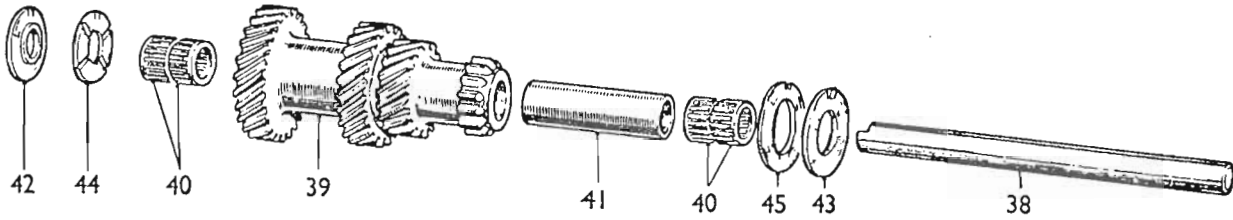
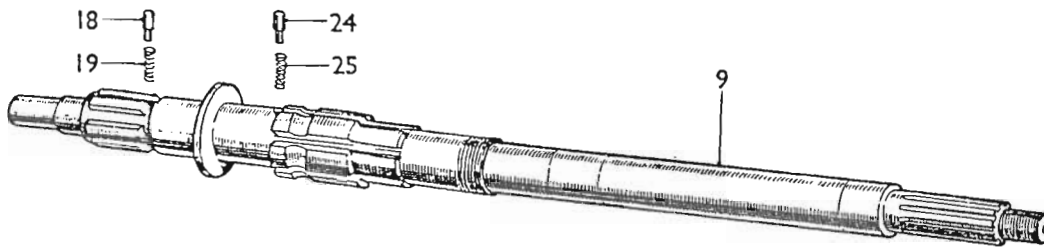
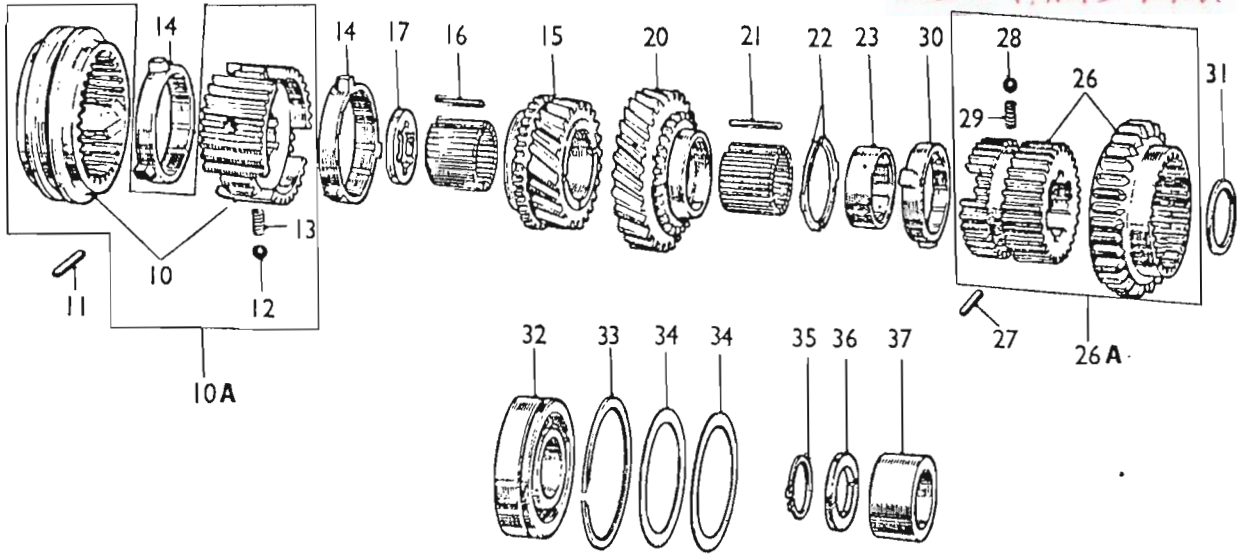
DESCRIPTION	Part No.	Illus. No.	Quantity	Change Point	REMARKS
-------------	----------	------------	----------	--------------	---------

**GEARBOX WITH OVERDRIVE  
(Optional Extra)  
(BJ8)**

*2.14. PARTS - BRIT MF10*

<b>Gearbox assembly</b>	22B 170	1	1		
<b>Housing—clutch</b>	22B 172	2	1		W.S.E. use 22B 237
<b>Housing—clutch</b>	22B 237	2	1		
Bush—fork and shaft	AEC 3102	3	2		
Pad—buffer	AEC 3298	4	1		For use with 22B 172 only
Seal—oil	10K 7089	5	1		
Bolt—2 1/4" (5.71 cm)	11BN 0518	6	1		
Bolt—1 1/8" (2.85 cm)	11NS 0509	7	8		
Washer—spring	LWN 205	8	9		
<b>Fork and shaft assembly—clutch with-drawal</b>	AEC 3088	9	1		
Screw—shaft blanking	AEC 3221	10	1		
Pin—taper	TPS 0610	11	1		
Washer—thrust—fork and shaft	AEC 3105	12	2		
Seal—fork and shaft	AEC 3106	13	1		
Plate—seal retaining	AEC 3168	14	1		
Screw	53K 1435	15	3		
Washer—spring	LWN 204	16	3		
Cover—starter end	1B 3346	17	1		
Screw—cover to housing	AEC 3207	18	3		
Washer—spring	LWN 204	19	3		
Casing—gearbox	22B 138	20	1		
Plug—oil drain	6K 499	21	1		
Gasket—casing to clutch housing	AEC 3601	22	1		
Plug—interlock ball hole—screwed	AEC 479	23	1	(E) 29K/H101 to H5793	
				(E) 29KF/H101 to H223	
Plug—interlock ball hole—plain	2K 1351	23A	1	(E) 29K/H5794 on	
				(E) 29KF/H224 on	
<b>Housing—mainshaft bearing</b>	AEC 3533	24	1		
Peg—locating	AEC 3112	25	1		
<b>Indicator—oil level</b>	AEC 3683	26	1		
Grommet (rubber)	AEC 3461	27	2		
Cover—gearbox top	†22B 197	28	1	(G) 101-1441	W.S.E. use 8G 3016
<b>Cover assembly—gearbox top</b>	8G 3016	28	1		
Pin—locating—change speed lever	2A 3602	29	2	(G) 1442 on	
Washer—spring	LWZ 304	30	2		
Gasket—cover to gearbox	AEC 3492	31	1		
Seal—oil—cover	AEJ 51	32	1		
Switch—overdrive	AEJ 20	33	1		
Gasket—switch	2K 7914	34	1		
Bolt—1 7/8" (4.76 cm)	HBN 0515	35	2		
Bolt—1 1/2" (3.81 cm)	HBN 0512	36	10		
Washer—spring	LWN 205	37	12		

2.14. PARTS-BRIT F11

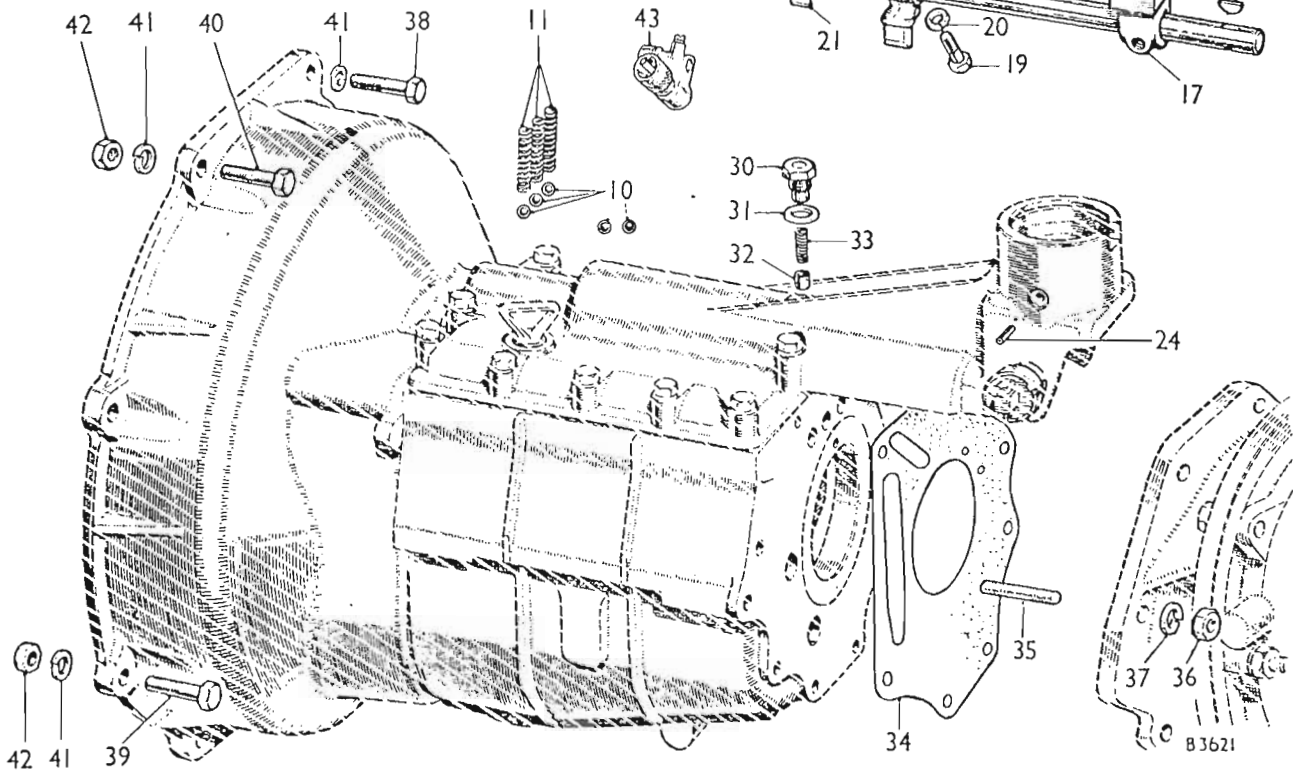
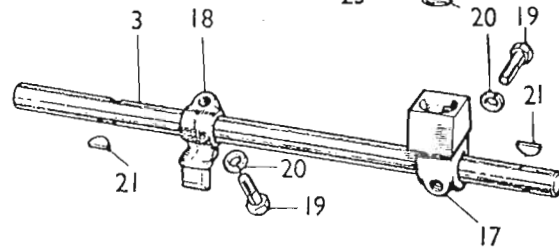
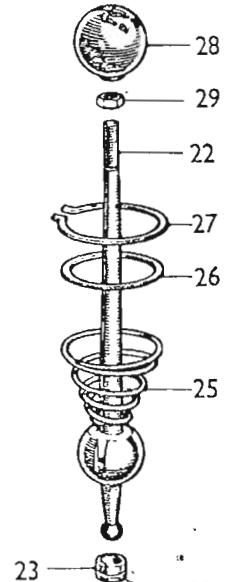
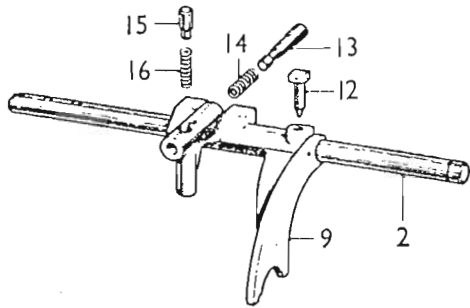
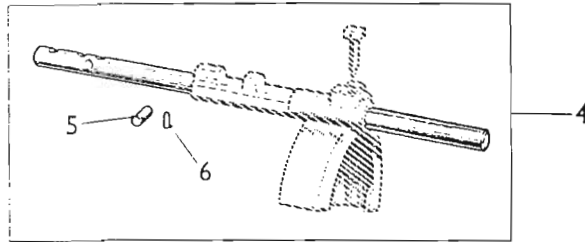
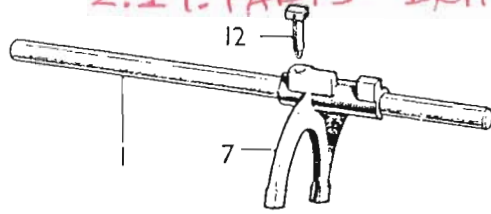
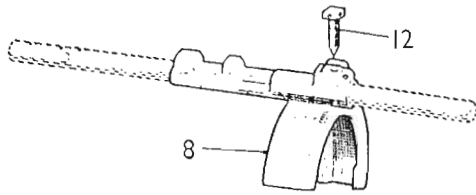


E 2 4 3 9

DESCRIPTION	Part No.	Illus. No.	Quantity	Change Point	REMARKS
<b>Gearbox with Overdrive (BJ8)—continued</b>					
Gear—drive	22B 140	1	1		
Bearing—drive gear	6K 777	2	1		Part No. change; was 6K 830
Circlip—bearing	6K 780	3	1		
Shim—packing—bearing	22B 152	4	A/R		
Shim—packing—bearing	22B 153	4	A/R		
Nut—bearing to drive gear	AEB 3124	6	1		
Washer—locknut	AEC 3185	7	1		
Bearing—pilot—drive gear	13H 1565	8	1		
Mainshaft	22B 171	9	1		
Coupling sleeve and synchronizer—3rd and 4th speed	†8G 3015	10	1		] W.S.E. use 8G 3024 W.S.E. use 8G 3026
	†8G 3023	10	1		
	†8G 3024	10	1		
Plunger—3rd and 4th speed synchronizer	22B 155	11	2		
Ball	BLS 110	12	3		
Spring—ball	AEC 3208	13	3		
<b>Coupling sleeve and synchronizer assembly</b>					
—3rd and 4th speed	†8G 3026	10A	1		
Sleeve—coupling	†NSP		1		
Synchronizer	†NSP		1		
Ball—synchronizer	†BLS 110	12	3		
Spring—ball	†AEC 3208	13	3		
Ring—balk—3rd and 4th speed	22B 159	14	2		
Gear—3rd speed	22B 144	15	1		
Roller—needle—gear	AEC 3180	16	32		
Plate—locking	22B 187	17	1		
Plunger—gear	AEC 3181	18	1		
Spring—plunger	AEC 3182	19	1		
Gear—2nd speed	22B 145	20	1		
Roller—needle—gear	AEC 3180	21	32		
Washer—gear	AEB 3111	22	2		
Plate—locking	22B 188	23	1		
Plunger—gear	AEC 3181	24	1		
Spring—plunger	AEC 3182	25	1		
Gear—1st speed and 2nd speed synchronizer	8G 3014	26	1		W.S.E. use 8G 3025
<b>Gear—1st speed and 2nd speed synchronizer assembly</b>					
Gear—1st speed	NSP		1		
Synchronizer—2nd speed	NSP		1		
Ball—synchronizer	BLS 110	28	3		
Spring—ball	AEC 3208	29	3		
Plunger—2nd speed synchronizer	22B 158	27	1		
Ring—balk—2nd speed	22B 149	30	1		
Collar—distance—mainshaft	AEB 3115	31	1		
Bearing—mainshaft	6K 681	32	1		
Circlip—bearing	1K 3055	33	1		
Shim—packing—bearing	†1B 3668	34	A/R		] Alternatives
Shim—packing—bearing	†1B 3669	34	A/R		
Circlip—mainshaft	CCN 120	35	1		
<b>Collar—abutment—bearing</b>					
.187" (4.749 mm) thick	AEC 3484	36	A/R		
.190" (4.826 mm) thick	AEC 3484 03	36	A/R		
.193" (4.902 mm) thick	AEC 3484 06	36	A/R		
Ring—abutment collar retaining	AEC 3485	37	1		
Layshaft	22B 142	38	1		
Laygear	22B 141	39	1		
Bearing—laygear	13H 1564	40	2 prs.		
Spacer—bearing	22B 196	41	1		
Plate—thrust—laygear—front	22B 182	42	1		
Plate—thrust—laygear—rear	22B 181	43	1		
<b>Washer—thrust—laygear</b>					
Front	AEC 3679	44	1		
Rear	22B 183	45	1		] Alternatives
Rear	22B 184	45	1		
Rear	22B 185	45	1		
Rear	22B 186	45	1		
Rear	AEC 3681	45	1		
Gear—reverse	22B 233	46	1		
Bush—gear	AEC 3119	47	1		
Shaft—gear	AEC 3340	48	1		
Screw—shaft retaining	AEC 3121	49	1		
Washer—spring	LWN 305	50	1		

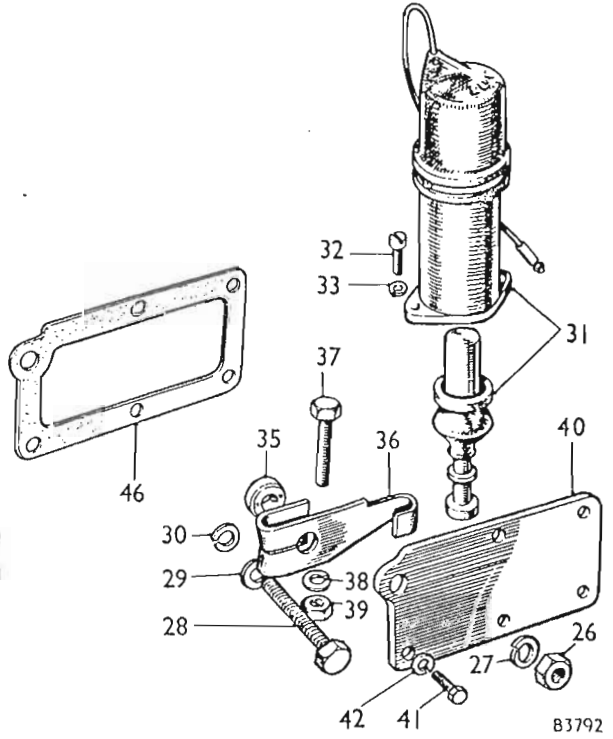
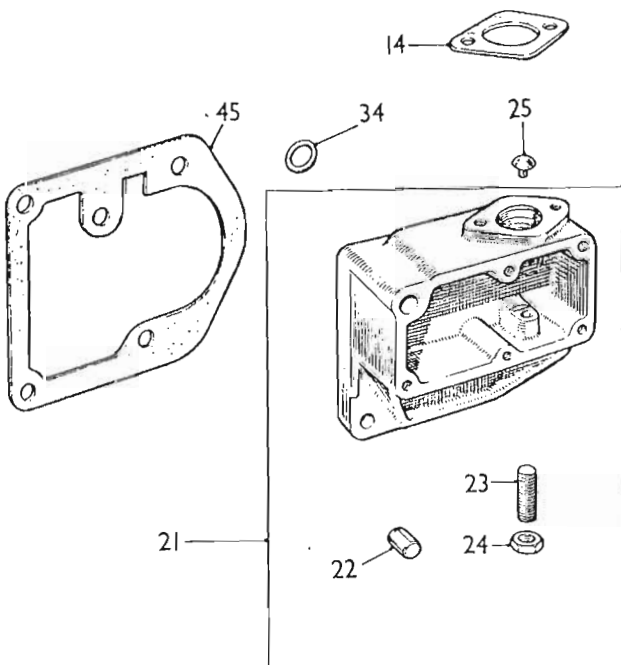
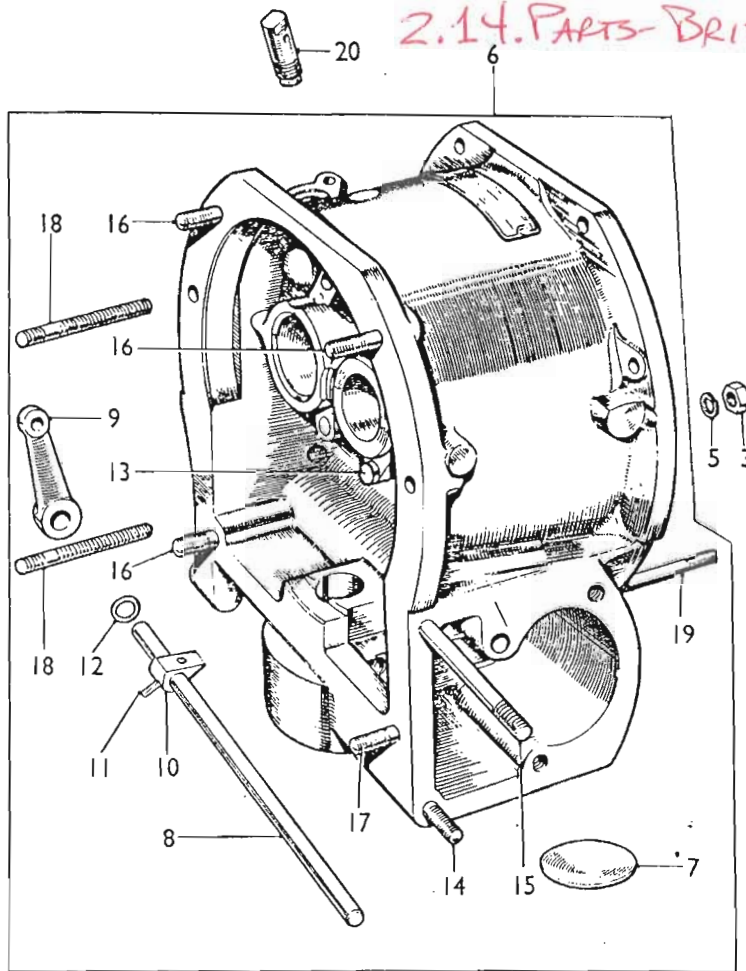
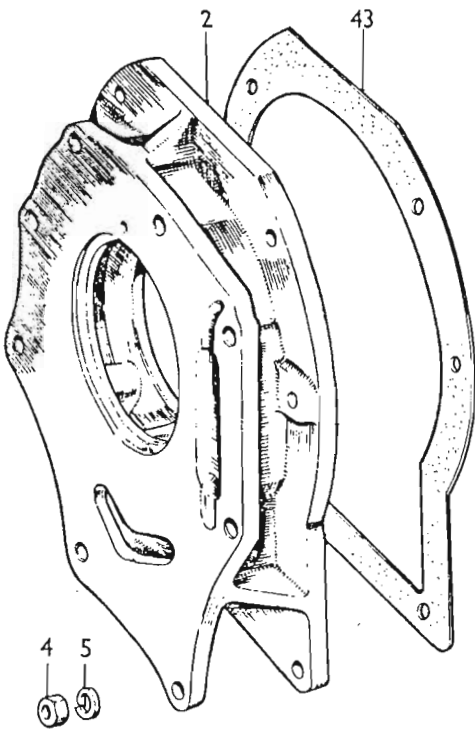
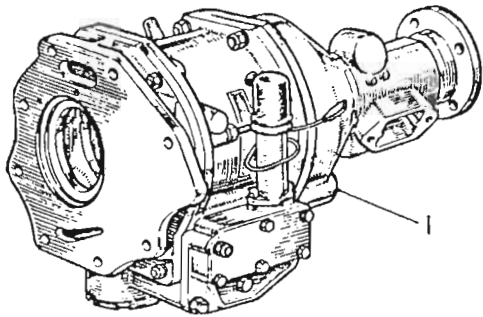
2.14. PARTS-BRIT MF11

2.14. PARTS - BRIT F12



DESCRIPTION	Part No.	Illus. No.	Quantity	Change Point	REMARKS
<b>Gearbox with Overdrive (BJ8)—continued</b>					
<i>2.14. PARTS BRIT MF12</i>					
<b>Shaft</b>					
3rd and 4th shifter .....	AEC 3342	1	1		
Reverse shifter .....	AEC 3343	2	1		
Remote control .....	AEC 3656	3	1		
<b>Shaft—1st and 2nd shifter</b>					
Pin—shaft interlocking .....	AEC 3557	4	1		
Rivet—pin .....	AEC 3187	5	1		
Rivet—pin .....	AEC 3188	6	1		
<b>Forks—striking</b>					
3rd and 4th .....	AEC 3625	7	1		
1st and 2nd .....	22B 146	8	1		
Reverse .....	AEC 3626	9	1		W.S.E. use 22B 162
Reverse .....	22B 162	9	1		
Ball—interlock—shifter shaft .....	BLS 110	10	5		
Spring—ball .....	AEC 3189	11	3		
Screw—fork to shifter shaft .....	AEB 3130	12	3		
Plunger—reverse selector .....	1B 3710	13	1		
Spring—plunger .....	2F 3198	14	1		
Plunger—detent .....	1B 3836	15	1		
Spring—plunger .....	22A 75	16	1		
Socket—change speed lever .....	22B 361	17	1		Part No. change; was 22B 192
Lever—selector .....	AEC 3636	18	1		
Bolt—selector lever and socket .....	AEC 3689	19	2		
Washer—spring—bolt .....	LWN 205	20	2		
Key—selector lever and socket .....	WKN 404	21	2		
Lever—change speed .....	22B 195	22	1		
Bush—lever .....	22B 191	23	1		
Rollpin .....	†RPS 1210	24	2	(G) 101-1441	Correction; was AEA 558
Spring—ball end retaining .....	AEC 3671	25	1		
Washer—spring .....	AEC 3659	26	1		
Circlip .....	1H 3087	27	1		
Knob—change speed lever .....	1B 3736	28	1		
Locknut—knob .....	54K 1723	29	1		
Plug—plunger retaining .....	AEG 3113	30	1		
Washer—plug .....	AEG 3122	31	1		
Plunger .....	AEG 3124	32	1		
Spring—plunger .....	AEG 3123	33	1		
<b>Overdrive unit assembly</b>					
For details see page MF 13					
Gasket—overdrive unit to gearbox .....	AEC 3605	34	1		
Stud—overdrive unit to gearbox .....	51K 505	35	8		
Nut—stud .....	FNN 505	36	8		
Washer—spring—nut .....	LWN 205	37	8		
Bolt—clutch housing to rear plate—1½" (3.81 cm) .....	HBZ 0612	38	1		
Bolt—clutch housing to rear plate—1½" (3.50 cm) .....	HBZ 0611	39	4		
Bolt—dowel—clutch housing to rear plate .....	AEC 3487	40	2		
Washer—spring—bolt .....	LWZ 206	41	7		
Nut—bolt .....	FNZ 106	42	6		
Adaptor box—speedometer drive .....	†1H 3131	43	1		W.S.E. use 13H 2567
Adaptor box—speedometer drive .....	†13H 2567	43	1		

2.14. PARTS - BRIT F13



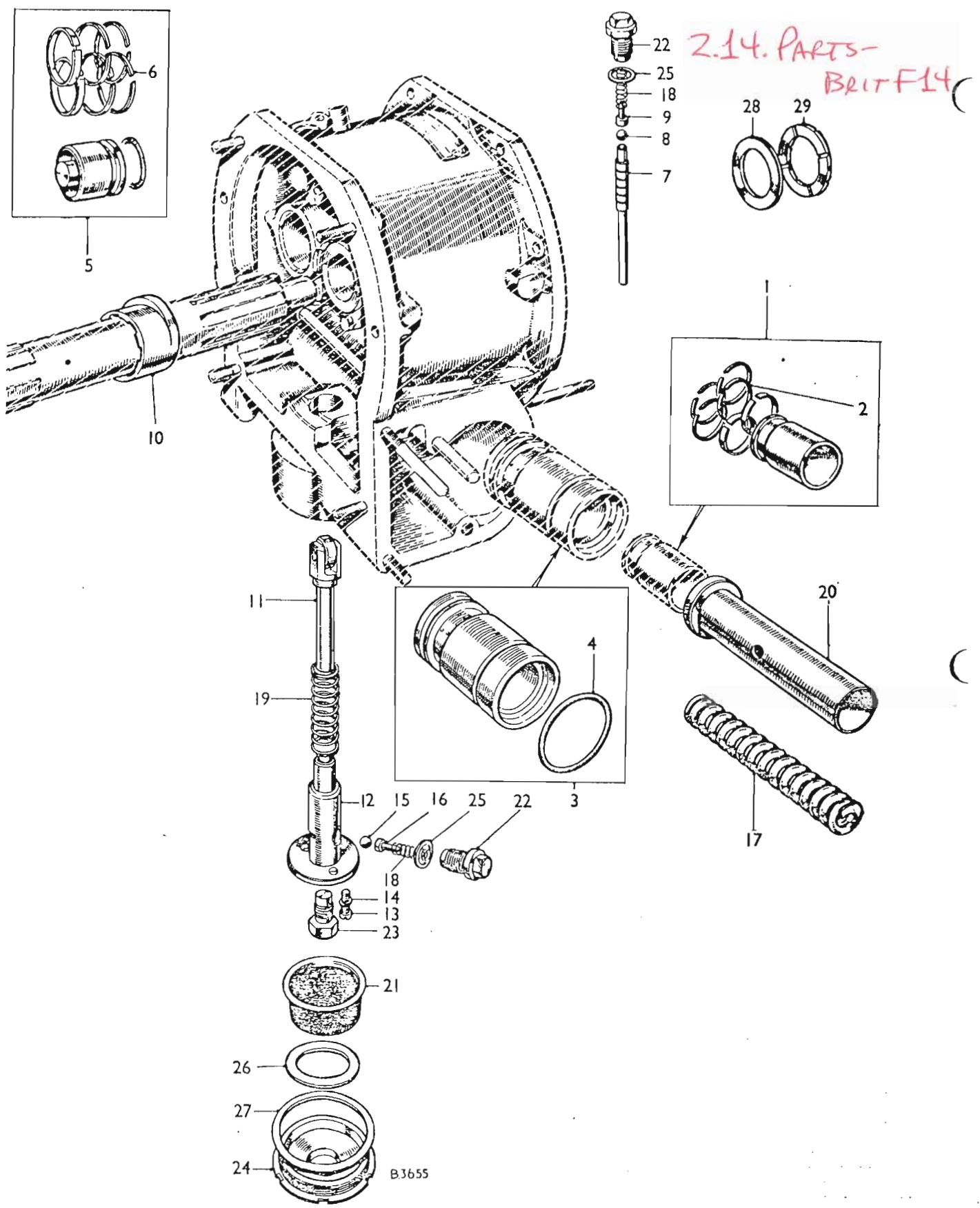
83792

F13

TO PAGE 13

DESCRIPTION	Part No.	Illus. No.	Quantity	Change Point	REMARKS
<b>OVERDRIVE UNIT</b>					
Overdrive unit assembly	AEC 3001	1	1	(E) 29F-H101 to 6188	
Overdrive unit assembly	22B 190	1	1	(E) 20K-H101 on	
Plate—adaptor	AEC 3623	2	1	(E) 29F-H101 to 6188	
Plate—adaptor	22B 204	2	1	(E) 29K-H101 on	
Nut—plate to casing	FNZ 105	3	2		
Nut—plate to casing	FNZ 205	4	4		
Washer—spring—nut	LWZ 205	5	6		
<b>Casing—front</b>	17H 5862	6	1		
Plug—Welch	7H 5897	7	1		
Shaft—valve operating	17H 5875	8	1		
Lever—shaft	7H 5822	9	1		
Cam—valve operating	7H 5827	10	1		
Pin—taper—cam and lever to shaft	TPS 0405	11	2		
Seal—oil—shaft	17H 5815	12	1		
Peg—guide—oil pump plunger	7H 5851	13	1		
<b>Stud</b>					
Solenoid bracket	FHS 0511	14	1		
Solenoid bracket	17H 5856	15	1		
Adaptor plate	FHS 0510	16	3		
Adaptor plate	7H 5831	17	1		
Adaptor plate	7H 5829	18	2		
Front casing to rear casing	7H 5833	19	2		
Breather	17H 5825	20	1		
<b>Bracket—solenoid</b>	27H 2315	21	1		
Dowel	27H 2412	22	1		
Screw—adjusting	27H 2413	23	1		
Locknut	27H 2414	24	1		Not available; use FNN 204
Locknut	†FNN 204	24	1		
Stop (rubber)	17H 5811	25	1		
Nut—bracket to casing	FNZ 105	26	2		
Washer—spring—nut	LWZ 205	27	2		
Screw—bracket to casing	HNS 0514	28	2		
Washer—plain—screw	PWZ 105	29	2		
Washer—spring—screw	LWZ 205	30	2		
Solenoid	AEJ 42	31	1		
Screw—solenoid to bracket	PMZ 0308	32	2		
Washer—spring—screw	LWZ 203	33	2		
Seal—oil—valve operating shaft	17H 5815	34	1		
Collar—distance—valve operating shaft	17H 5809	35	1		
Lever—solenoid	17H 5308	36	1		
Screw—lever to valve operating shaft	HZS 0400	37	1		
Washer—spring—screw	LWZ 204	38	1		
Nut—screw	FNZ 104	39	1		
Plate—cover—bracket	17H 5857	40	1		
Screw—plate to bracket	53K 126	41	5		
Washer—spring—screw	LWZ 203	42	5		
<b>Joint</b>					
Adaptor plate to casing	7H 5825	43	1		
Solenoid to bracket	7H 8196	44	1		
Solenoid bracket to casing	7H 5852	45	1		
Solenoid bracket cover plate	17H 5858	46	1		

2.14. PARTS - BRIT MF13





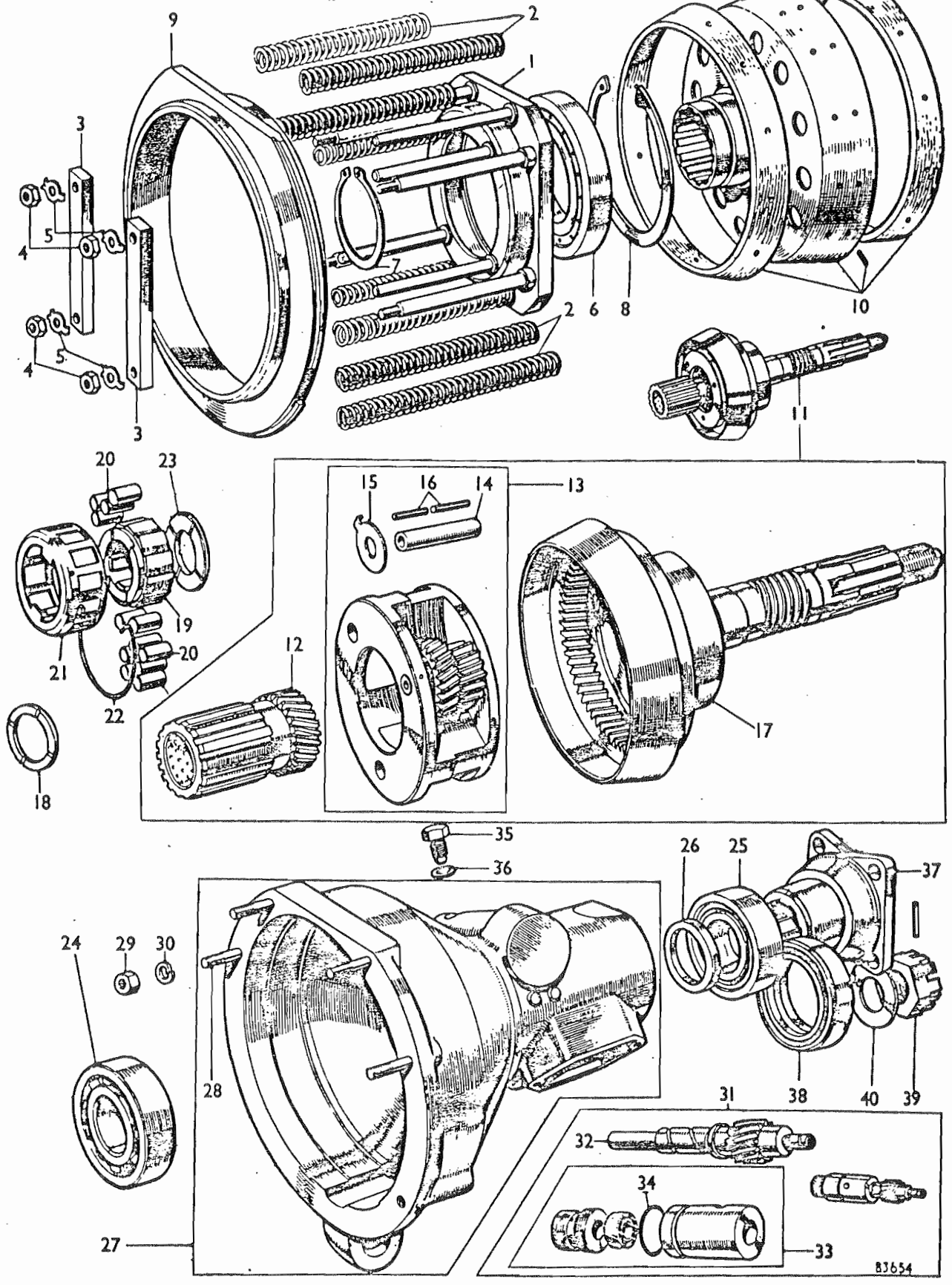
DESCRIPTION	Part No.	Illus. No.	Qty. per Veh.	Stock recommds.			Change Point	REMARKS
				DIST.				
				Exp.	UK	D		

2.14. PARTS-BRIT MF14

Overdrive Unit—continued

Piston assembly—accumulator	17H 5847	1	1					
Ring—piston	7H 5849	2	2 sets					
Housing assembly—accumulator	17H 5848	3	1					
Ring (rubber)	7H 5846	4	1	*	*			
Piston assembly—operating	17H 5873	5	1					
Ring—piston	17H 5874	6	2					
Valve—operating	17H 5827	7	1	*	*			
Ball—valve plunger	BLS 110	8	1	*	*			
Plunger—valve	7H 5887	9	1	*	*			
Cam—oil pump	1B 8050	10	1					
Plunger—oil pump	17H 5977	11	1					
Body—oil pump	7H 5840	12	1					
Screw—body to casing	PMZ 0308	13	2					
Washer—spring—screw	LWZ 203	14	2					
Ball—oil pump valve plunger	BLS 108	15	1	*	*			
Plunger—ball	7H 5887	16	1	*	*			
<b>Springs</b>								
Accumulator pressure	17H 5838	17	1	*	*			
Valve plungers	7H 5836	18	2	*	*			
Oil pump plunger	7H 5830	19	1	*	*			
Tube—accumulator pressure spring	7H 5845	20	1					
Strainer—oil pump	17H 5878	21	1					
<b>Plugs</b>								
Valve	17H 5876	22	2					
Oil pump body	7H 5841	23	1					
Oil drain	17H 5870	24	1					
Washer—valve plug (copper)	7H 5898	25	2					
Magnet—oil drain plug	17H 8157	26	1					
Washer—oil drain plug	7H 5857	27	1					
<b>Washers—sunwheel adjusting—front</b>								
.118" to .114" (2.87 mm. to 2.80 mm.)	7H 5872A	28	A/R					
.107" to .108" (2.71 mm. to 2.74 mm.)	7H 5872B	28	A/R					
.101" to .102" (2.56 mm. to 2.59 mm.)	7H 5872C	28	A/R					
.095" to .090" (2.40 mm. to 2.43 mm.)	7H 5872D	28	A/R					
.080" to .090" (2.26 mm. to 2.28 mm.)	7H 5872E	28	A/R					
.083" to .084" (2.10 mm. to 2.13 mm.)	7H 5872F	28	A/R					
.077" to .078" (1.95 mm. to 1.98 mm.)	7H 5872G	28	A/R					
Washer—sunwheel thrust—front	7H 5873	29	1					

2.14. PARTS-BEIT F15



To face page MF 15

83654

DESCRIPTION	Part No.	Illus. No.	Qty. per Veh.	recommds.			Change Point	REMARKS
				DIST.				
				Exp.	UK	D		
<b>Overdrive unit—continued</b>								
Ring—clutch thrust	7H 5861		1	1				
Spring—clutch	17H 5804		2	1	set			
Bridge bar	7H 5862		3	2				
Nut—bridge bar	FNN 104		4	4				
Washer—tab—nut	7H 5863		5	4				
Bearing—thrust ring	7H 5866		6	1	★ ★			
Circlip—bearing—small	7H 5867		7	1				
Circlip—bearing—large	7H 5868		8	1				
Ring—clutch brake	17H 5824		9	1				
Sliding member—clutch	7H 5870		10	1				
<b>Sunwheel, planet carrier and annulus assembly</b>	†N.S.P.		11	1	★ ★			Was 17H 5861
Sunwheel	17H 5864		12	1				
<b>Carrier assembly—planet</b>	17H 5865		13	1				
Shaft—planet wheel	17H 5844		14	3				
Washer—thrust	17H 5859		15	3				
Roller—needle—planet wheel	17H 5846		16	6				
Annulus	17H 5867		17	1				
Washer—sunwheel thrust—rear	17H 5869		18	1				
Inner member—roller clutch	7H 5870		19	1				
Roller—clutch	17H 5823		20	1	set			
Cage—roller	7H 5881		21	1				
Ring—spring—clutch	7H 8273		22	1				
Washer—clutch thrust	7H 5883		23	1				
Bearing—annulus—front	2K 5507		24	1	★ ★			
Bearing—annulus—rear	7H 5884		25	1	★ ★			
<b>Washers—annulus end fit</b>								
•140" (3.70 mm.)	7H 5885E		26	A/R				
•151" (3.83 mm.)	7H 5885F		26	A/R				
•150" (3.90 mm.)	7H 5885G		26	A/R				
•161" (4.08 mm.)	7H 5885H		26	A/R				
•160" (4.21 mm.)	7H 5885J		26	A/R				
<b>Casing—rear</b>	17H 5822		27	1				
Stud—rear casing to front casing	FHS 0513		28	4				
Nut—stud	FNZ 105		29	6				
Washer—spring—nut	LWZ 205		30	6				
<b>Pinion assembly—speedometer</b>	17H 5863		31	1	★ ★			
Pinion	17H 5855		32	1				
<b>Bearing assembly</b>	17H 5819		33	1				
'O' ring	17H 5818		34	1				
Seal—oil	N.S.P.		1					
Screw—Pinion locking	7H 5894		35	1				
Washer—spring—screw	LWZ 205		36	1				
Flange—coupling	17H 5821		37	1				
Seal—oil—flange	17H 5854		38	1	★ ★			
Nut—flange to annulus	7H 5889		39	1				
Washer—plain—nut	PWN 112		40	1				

2.14. PARTS-BRIT F15